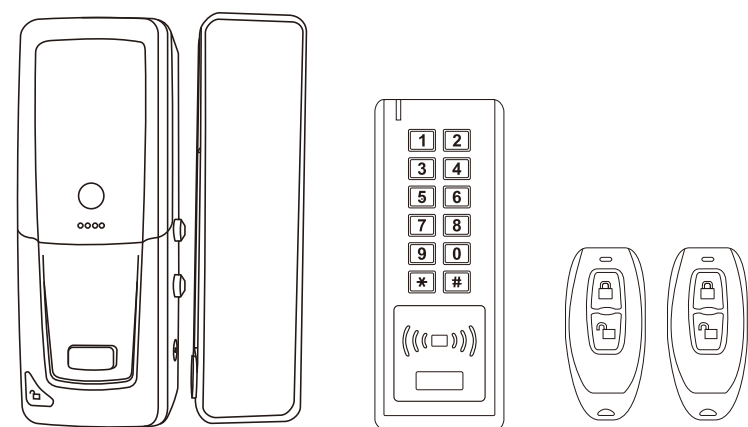


Wireless DIY Access Control



User Manual

INTRODUCTION

The D2/D4 is a wireless smart access control for glass door use. It consists of a metal waterproof Wireless Keypad, a Wireless Lock and two Remote Transmitters. Super strong 3M stickers provide a simple way for installation. 433MHz Rolling Code of encryption algorithm and the split design guarantee higher-secure. The Keypad can store 500 PIN/card users. Because of ultra low power consumption, the Keypad and Remote Transmitters can work as long as one year (basing on 30 times/day). Wireless Lock can work for 6 months. It will remind people to replace batteries intelligently if low battery.

Common Features:

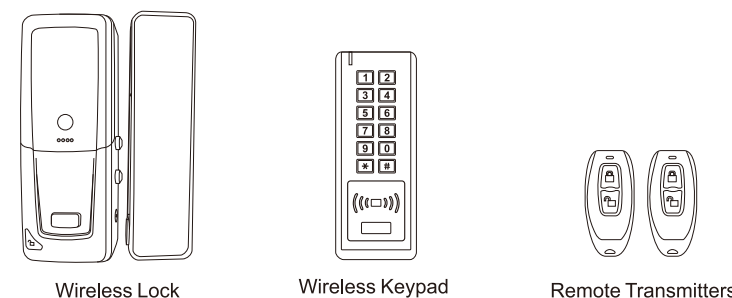
- 500 PIN/card users
- 4-8 digits PIN, 125 KHz EM Card
- With two Remote Transmitters
- 433MHz Rolling Code technology
- Communication distance: 50m Max
- Ultra low power consumption

Specifications:

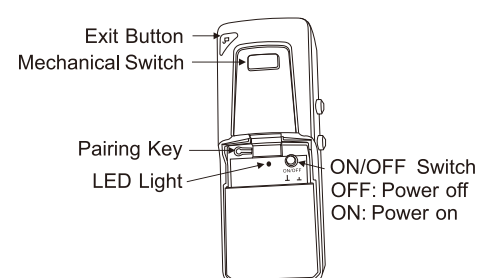
User Capacity	500
PIN Length	4-8 Digits
Card Type	125KHz EM Card
Operating Voltage	3 units of AAAA batteries
Wireless Keypad	4 units of AA batteries
Wireless Lock	1 unit of 2032 Lithium battery
Remote Transmitter	
Idle Current	All items ≤10uA
Working Current	
Wireless Keypad	≤50mA
Wireless Lock	≤42mA
Remote Transmitter	≤3mA
Communication Frequency	433MHz
Communication Distance	50m Maximum
Operating Temperature	
Wireless Keypad	-40°C ~ +60°C (-40°F ~ +140°F)
Wireless Lock	-20°C ~ +60°C (-4°F ~ +140°F)
Operating Humidity	0% ~ 86%RH
Physical	
Wireless Lock	D2 Zinc-Alloy D4 Zinc-Alloy
Wireless keypad	ABS Shell Zinc-Alloy(IP66)
Others	ABS Shell ABS Shell

Dimensions	D2	D4
Wireless Keypad	L135*W54*D19(mm)	L148*W56*D22.5(mm)
Wireless Lock	L184*W122*D26(mm)	L184*W122*D26(mm)
Remote Transmitter	L62*W30*D11.5(mm)	L62*W30*D11.5(mm)
Unit Weight	D2	D4
Wireless Keypad	90g	285g
Wireless Lock	800g	800g
Remote Transmitter	25g/pc	25g/pc
Shipping Weight	1480g	1240g

Major Parts



Instruction of the keys on lock body



Note:
1. Mechanical Switch: Used for installation and equipment trouble, please don't press it often in the normal condition. When press the Mechanical Switch, the lock will be unlocked all the time until open the door one time by valid card, or valid PIN, or press the Exit button, or unlock button on Remote Transmitter.

2. ON/OFF Switch
When the button is off, the power of lock is off, all keys are useless except Mechanical Switch.
a. When the lock is unlocked, and you want to keep it unlocked, you can press the button OFF. The lock will work normally after press button ON.

b. When the lock is locked, and you want to keep it locked, you can press the Switch OFF, and then no one can access the door. The lock will work normally after press button ON.

When the button is on, the power of lock is on, the lock will be locked automatically in seconds and all keys can work normally.

INSTALLATION

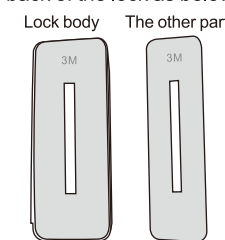
Stick by 3M stickers

The device packed with 3M double-side stickers, can easily stick the Wireless Keypad and Wireless Lock on glass door (We use high-quality 3M stickers, the stickiness will be the best after sticking in 24 hours).

Below introduction for how to install Wireless Lock intensively, the way of installing Wireless Keypad is almost the same.

Stick the 3M stickers on the lock

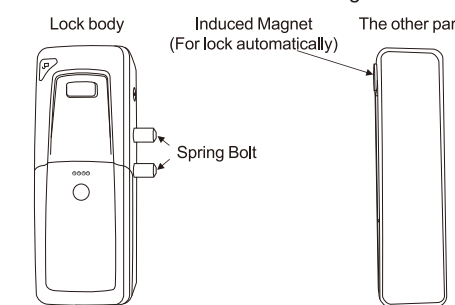
Stick the 3M stickers on the back of the lock as below picture.



Stick the lock on glass door

Stick the 3M stickers on the back of the lock as below picture.

Clean the stick part of glass door by dry cloth. Put the batteries into lock, press the lock button on Remote Transmitter to make the spring bolt protruded (This is for aligning the other part). Take out the 3M stickers on the lock, align the other part, stick on the glass door, press them for some seconds (We used high-quality 3M stickers, the stickiness will be the best after sticking in 24 hours).



Stick the opposite paster

After stick the lock on glass door, people can see the 3M sticker outdoor from the glass door, it looks inaeesthetic. We prepare an opposite paster which to stick the other side of lock on glass door.

PROGRAMMING

Enter and Exit Program Mode

Programming Step	Keystroke Combination
1. Enter Program Mode	* (Master Code) # (Factory default is 123456)
2. Exit	*

Set Master Code

Please do remember your Master Code because the Master Code can't be reset if forget it.

Programming Step	Keystroke Combination
1. Enter Program Mode	* (Master Code) #
2. Update Master Code	0 (New Master Code) # (Repeat New Master Code) # Master code is any 6 digits
3. Exit	*

Add Users PIN(s)

User ID: 0-499
PIN length: 4-8 digits

Programming Step	Keystroke Combination
1. Enter Program Mode	* (Master Code) #
2. Add PIN	1 (User ID) # (PIN) # (Repeat PIN) # The users can be added continuously
3. Exit	*

Add Users Card(s)

User ID: 0-499
Card type: 125 KHz EM Card

Programming Step	Keystroke Combination
1. Enter Program Mode	* (Master Code) #
2. Add Card: Using Auto ID (Allows to assign Card to next available User ID number)	1 (Read Card) # The cards can be added continuously
OR	
2. Add Card: Select Specific ID (Allows Master to define a Specific User ID to associate the card)	1 (User ID) # (Read Card) #
3. Exit	*

Simplified Instruction

Function description	Operation
Enter the Program Mode	* (Master Code) # (123456 is the factory default master code)
Change the Master Code IMPORTANT NOTE: Please remember the New Master Code as it can't be reset to default if forgotten	0 (New Code) # (Repeat New Code) # (code: 6 digits)
Add PIN User	1 (User ID) # (PIN) # (Repeat PIN) #
Add Card User	1 (Read Card)
Delete User	2 (User ID) # 2 (Read Card)
Exit from the Program Mode	*
How to release the door	
PIN Access	PIN #
Card Access	# (Read Card)
By Remote Transmitter	Press []
Lock Immediately	
By Keypad	Press '0 #'
By Remote Transmitter	Press []

Change PIN

Note: Below is done outside programming mode, users can undertake this step by themselves.

Programming Step	Keystroke Combination
1. Change PIN: By Card (There will be auto allocate PIN (8888) to cards when adding)	* (Read Card) (Old PIN) # (New PIN) # (Repeat New PIN) #
OR	
1. Change PIN: By User ID	* (User ID) # (Old PIN) # (New PIN) # (Repeat New PIN) #
2. Exit	Exit automatically

Delete Users

Programming Step	Keystroke Combination
1. Enter Program Mode	* (Master Code) #
2. Delete user	2 (User ID) #
OR	
2. Delete Card	2 (Read Card) #
OR	
2. Delete all users	2 (Master Code) #
3. Exit	*

Set Access Mode

Programming Step	Keystroke Combination
1. Enter Program Mode	* (Master Code) #
2. PIN Access	3 0 #
OR	
2. PIN + Card Access	3 1 #
OR	
2. PIN or Card Access	3 2 # (factory default)
3. Exit	*

Set Safety Mode

In safety mode, it can be set to deny access for 10 minutes after 10 failed PIN/card attempts in 10 minutes (Factory default is OFF).

Programming Step	Keystroke Combination
1. Enter Program Mode	* (Master Code) #
2. Strike-Out OFF	6 0 # (factory default)
OR	
2. Strike-Out ON	6 1 #
3. Exit	*

Set Buzzer

Programming Step	Keystroke Combination
1. Enter Program Mode	* (Master Code) #
2. Buzzer OFF	7 0 #
OR	
2. Buzzer ON	7 1 # (factory default)
3. Exit	*

OTHERS

Users Operation

Programming Step	Keystroke Combination
PIN User Access	(PIN) #
Card User Access	# (Read Card)
PIN + Card User Access	# (Read Card) (PIN) #
By Remote Transmitter	Press []

Lock Immediately

The Wireless Lock will be locked automatically around 5 seconds after we open it. If we want to lock it faster, please press "0 #" on the Keypad, or press [] on the Remote Transmitter, it will lock immediately.

Pair Wireless Keypad /Remote Transmitter with Wireless Lock

(They are already paired when out of factory, if no problem, the users do not need to do this operation in using.)

Note: 1. The Wireless Lock can pair 16 parts (Keypad + Remote Transmitter) maximum.
2. When pairing, all parts must be paired, then exit pairing mode. If need adding one more part, you still need to pair all parts again.

Step 1: Enter pairing mode

Open the battery cover of Wireless Lock, press the small round button left of battery with a slender rod, hold it for 2 seconds until hearing one long beep and two beeps, that means in the pairing status.

Step 2: Pairing Wireless Keypad

Press the button "0 #" on the keypad, hold it for 2 seconds until hearing two beeps from Lock, that means pairing successfully.

Step 3: Pairing Remote Transmitter

Press any button on the Remote Transmitter, hold it until hearing one beep from Lock, that means pairing successfully.

Step 4: Exit pairing mode

After pairing all parts, press the small round button in the Wireless Lock again, hold it until hearing one beep, that means exit pairing successfully.

Sound and Light Indication

Device	Operation Status	Red LED	Green LED	Buzzer
Keypad	Standby	--	--	--
	Enter into program mode	Shines per 1.5 seconds	--	One beep
	Unlock the lock	--	ON for 3 seconds	One beep
	Press key	--	--	One beep
	Wrong operation	--	--	Three beeps
	Invalid PIN/card	--	--	Three beeps
	Exit from the program mode	--	ON for 1 seconds	One beep
Lock	Low battery reminding	Orange LED ON		Three beeps when press any button
	Pairing	ON	--	One long beep
	Unlock the lock	ON for 1 second	--	Two beeps
Remote Transmitter	Lock	ON for 1 second	--	One beep
	Low battery reminding	LED shining, and beeps		(Note: The lock will open automatically when the battery is too low or run out, please change the battery IN TIME!)
	Press button	LED ON for 1 second		
Low battery reminding	When the LED is dim, please change the battery			

Packing List

Name	Quantity
Packaging box	1pc
Wireless Keypad	1pc
Wireless Lock	1pc
Remote Transmitters	2pcs
Manual	1pc
Screw Driver	1pc
Wall Fixing Plus	4pcs
Self Tapping Screws for keypad (Smaller ones)	4pcs
Self Tapping Screws for lock (Bigger ones, just in case if needed)	10pcs
3M Stickers	4pcs
Opposite paster	2pcs